

iPH



HIGHVAC CORPORATION

iPH Series

Dry Screw Vacuum Pumps

Designed for Harsh Applications

Powered by



Semiconductor Rated

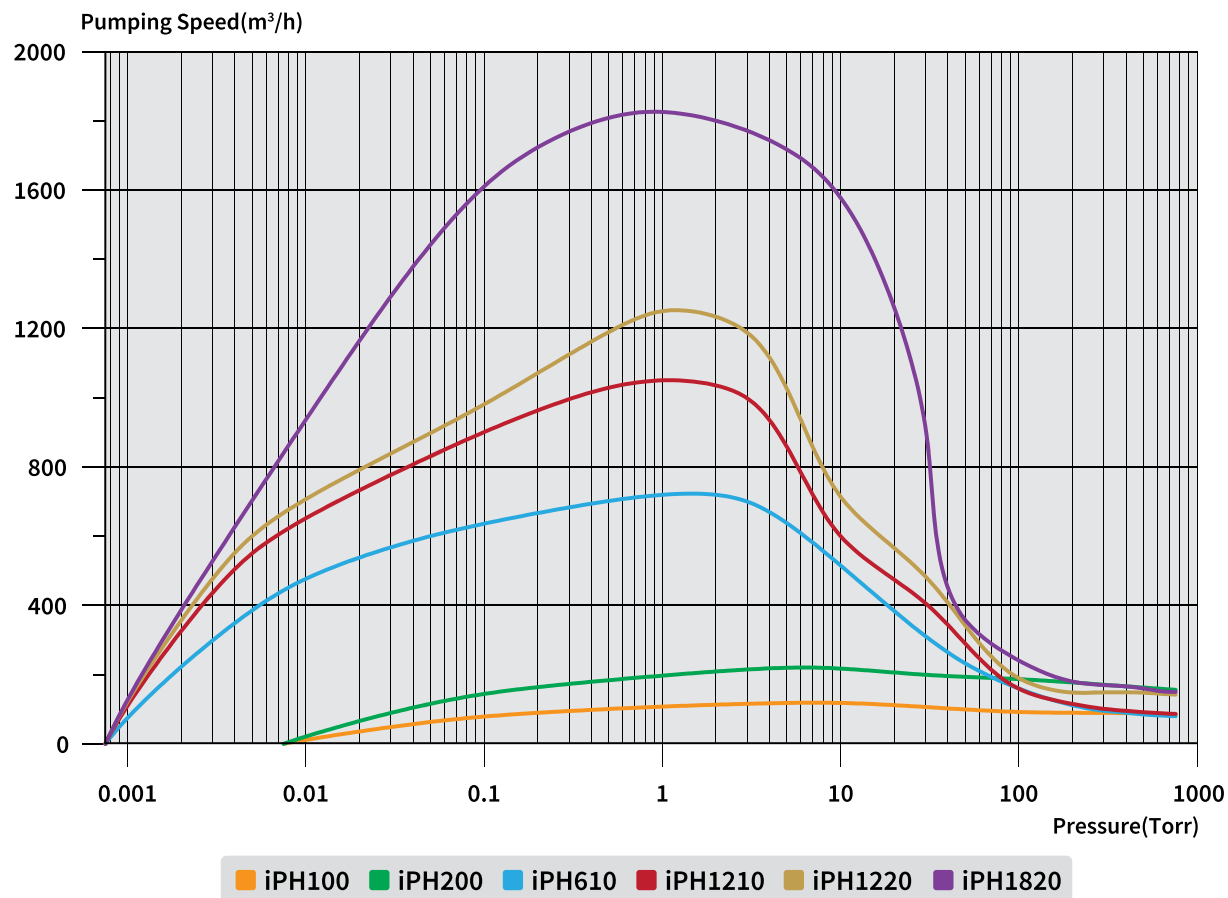
Hanbell Vacuum Technology has adapted the harsh duty proven technology from its industry leading PD series vacuum pumps into the iPH series semiconductor rated pumps. The iPH series pumps feature the latest in controls with the up-to-date SEMI E73 interface standard. Other features that enhance the capabilities of these pumps in harsh duty applications include:

- Short gas path
- Integrated N₂ Heater
- Power saving VFDs
- Idle mode (green mode)
- Advanced temperature control
- Multiple internal coating options

Hanbell pumps provide both increased lifecycle and decreased cost of ownership. These factors combined with a highly competitive lead time make Hanbell an excellent choice. With strong factory support from Hanbell, Highvac delivers a combination of excellent service and exceptional quality to the North American market.

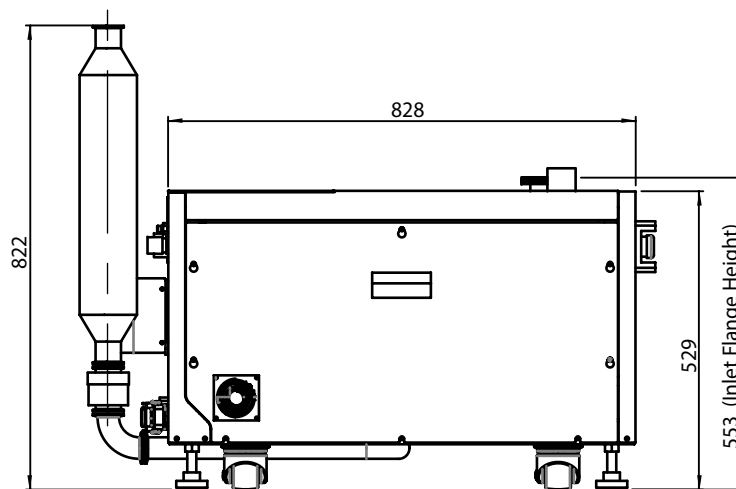
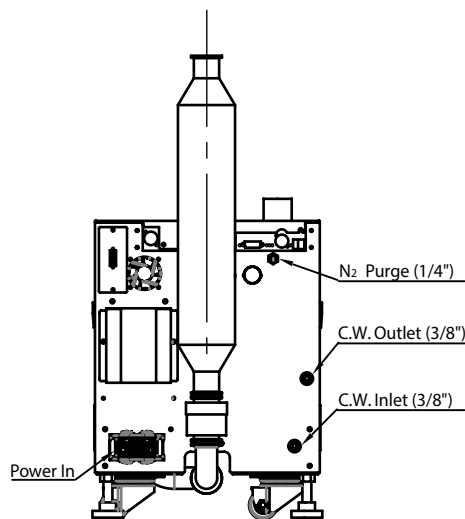
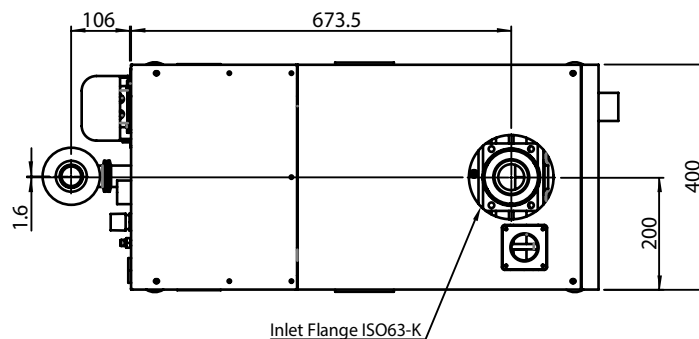


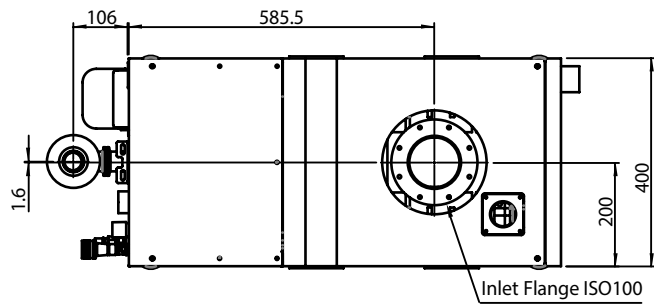
iPH Series Technical Specifications								
Model		Unit	iPH 100	iPH 200	iPH 610	iPH 1210	iPH 1220	iPH 1820
Pumping Speed m³/hr		Dry Pump	110	200	110	110	200	200
		Booster	-	-	600	1200	1200	1800
		Max	110	200	660	1100	1250	1850
Ultimate Pressure		Torr	≤ 7.5x10 ⁻³		≤ 7.5x10 ⁻⁴			
		mbar	≤ 1x10 ⁻²		≤ 1x10 ⁻³			
		Pa	≤1		≤ 0.1			
Motor	Frequency	Hz	50 / 60					
	Voltage	V	220 or 380 or 440 (3 Phase)					
	Rated Power	kW	5.5	5.5	3.7+3.7	3.7+3.7	5.5+3.7	5.5+5.5
	Power at Ultimate Pressure		2.8	2.6	2.6	3	4.5	4.7
Connection		Inlet	ISO63		ISO100			ISO160
		Outlet	NW40					
Cooling Water	Flow/Temp.	L/min	3 L/min @59°F - 7 L/min @86°F					
		°F						
N ₂ Purge	Pressure	psi	22 - 29					
	Flow	slm	5 - 60					
Dimension	LxWxH	inches	32.6x15.8x20.8	32.6x15.8x20.8	32.6x15.8x31	32.6x15.8x31	32.6x15.8x31	32.6x15.8x32.8
		mm	828x400x529	828x400x529	828x400x788	828x400x788	828x400x788	828x400x833
Weight		lbs	617	705	992	1003	1080	1190
		kg	280	300	450	455	470	530
Noise		dB(A)	<70					



iPH 100/200

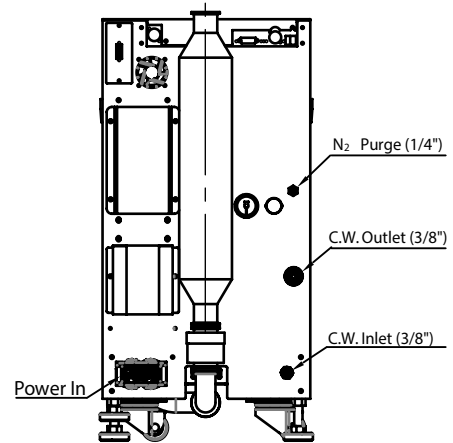
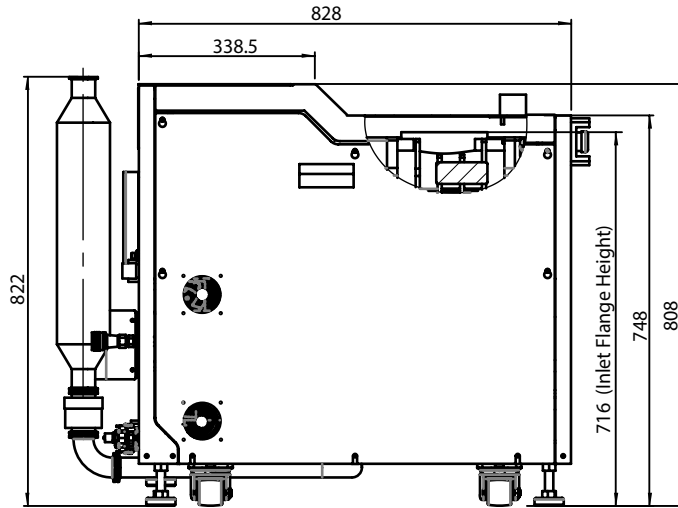
Dimensions are in mm





iPH 610/1210/1220

Dimensions are in mm



iPH 1820

Dimensions are in mm

