

iPH



HIGHVAC CORPORATION

*iPH Series
Dry Screw Vacuum Pumps*

Powered by
 **HANBELL**

Designed for Semiconductor

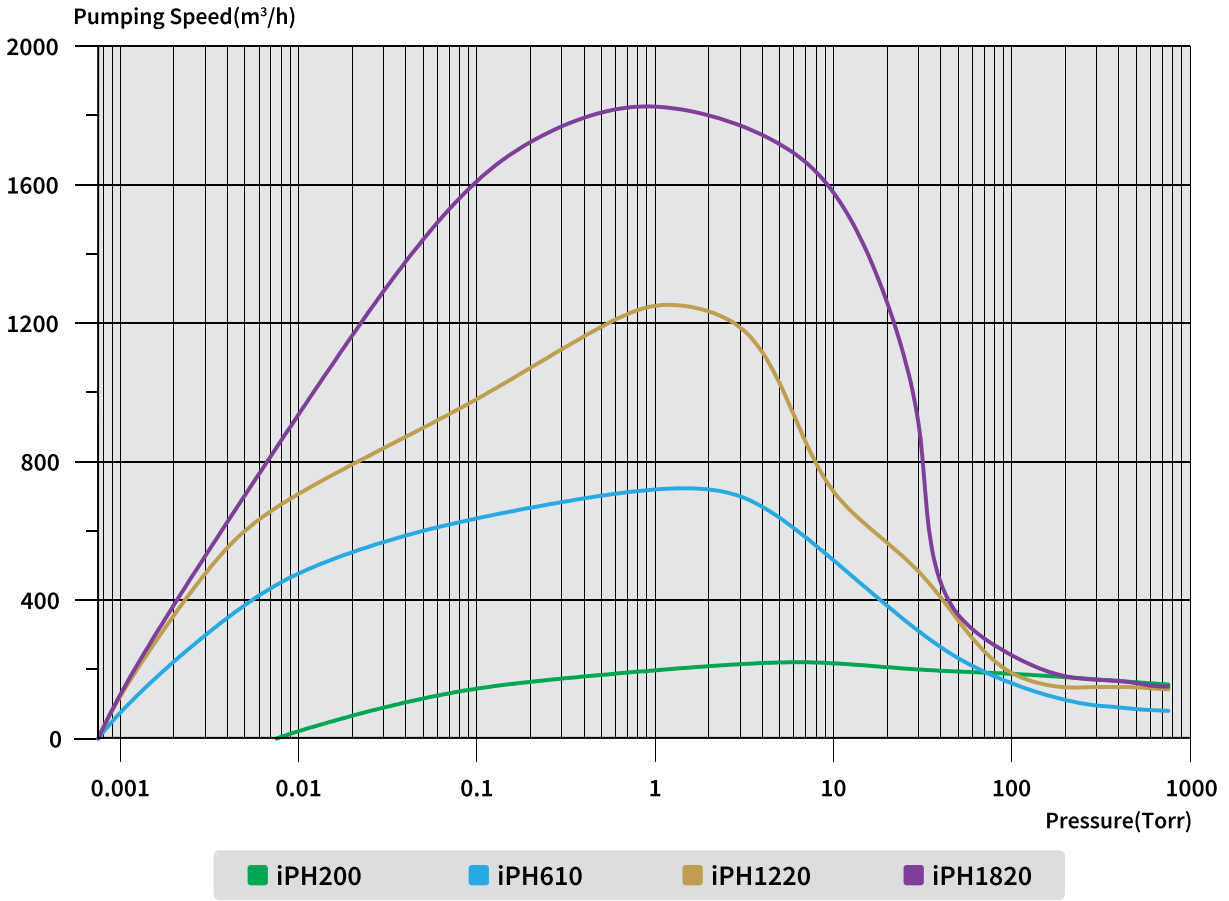
Hanbell Vacuum Technology has adopted the harsh duty proven technology from its industry leading PD series vacuum pumps into the iPH series semiconductor rated pumps. The iPH series pumps feature the latest in controls with up-to-date SEMI E73 interface standard. Other features that enhance the capabilities of these pumps in harsh duty applications include:

- Short gas path
- Integrated N₂ Heater
- Power saving VFDs
- Idle mode (green mode)
- Advanced temperature control
- Multiple internal coating options

Hanbell pumps provide both increased lifecycle and decreased cost of ownership. These factors combined with a highly competitive lead time make Hanbell an excellent choice. Highvac and Hanbell have forged a strong working relationship to deliver this combination of service and quality to the North American market.

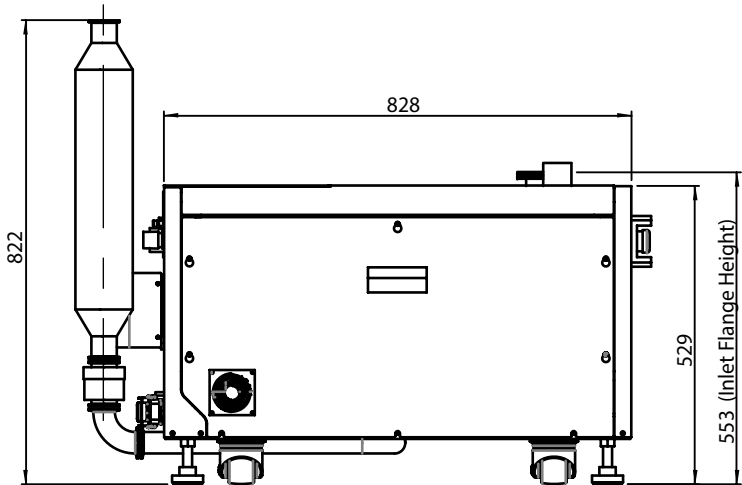
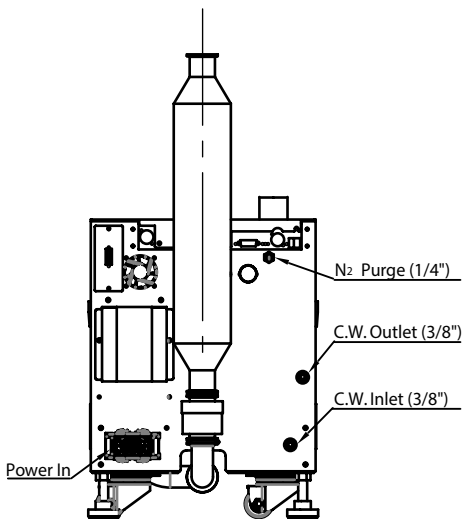
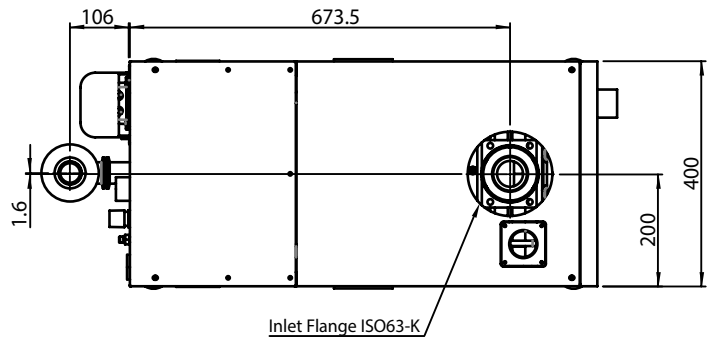


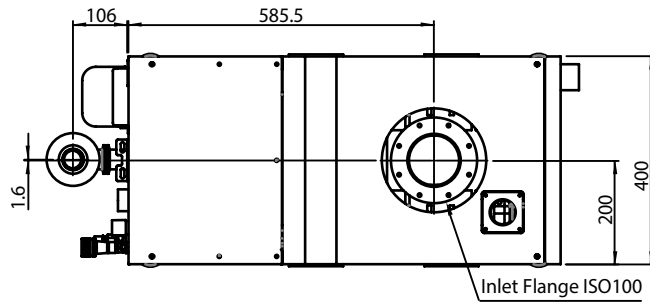
iPH Series Technical Specifications						
Model		Unit	iPH 200	iPH 610	iPH 1220	iPH 1820
Pumping Speed m ³ /hr		Dry Pump	200	120	200	200
		Booster	-	600	1200	1800
		Max	200	700	1250	1850
Ultimate Pressure		Torr	≤ 7.5x10 ⁻³	≤ 7.5x10 ⁻⁴		
		mbar	≤ 1x10 ⁻²	≤ 1x10 ⁻³		
		Pa	≤ 1	≤ 0.1		
Motor	Frequency	Hz	50 / 60			
	Voltage	V	220 or 380 or 440 (3 Phase)			
	Rated Power	kW	5.5	3.7+3.7	5.5+3.7	5.5+5.5
	Power at Ultimate Pressure		3.5	2.6	4.5	4.7
Connection		Inlet	ISO63	ISO100		ISO160
		Outlet	NW40			
Cooling Water	Flow/Temp.	L/min	3 L/min @59°F - 7 L/min @86°F			
		°F				
N ₂ Purge	Pressure	psi	22 - 29			
	Flow	slm	5 - 60			
Dimension	LxWxH	inches	32.6x15.8x20.8	32.6x15.8x31	32.6x15.8x31	32.6x15.8x32.8
		mm	828x400x529	828x400x788	828x400x788	828x400x833
Weight		lbs	705	992	1080	1190
		kg	300	450	470	530
Noise		dB(A)	<70			



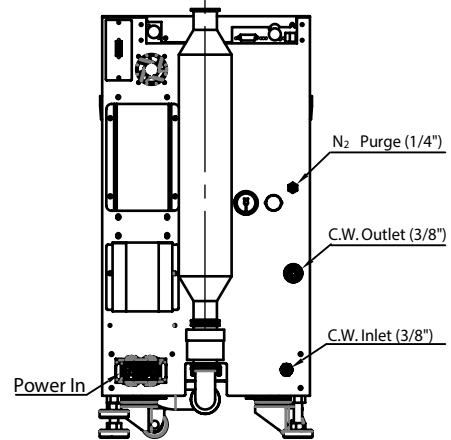
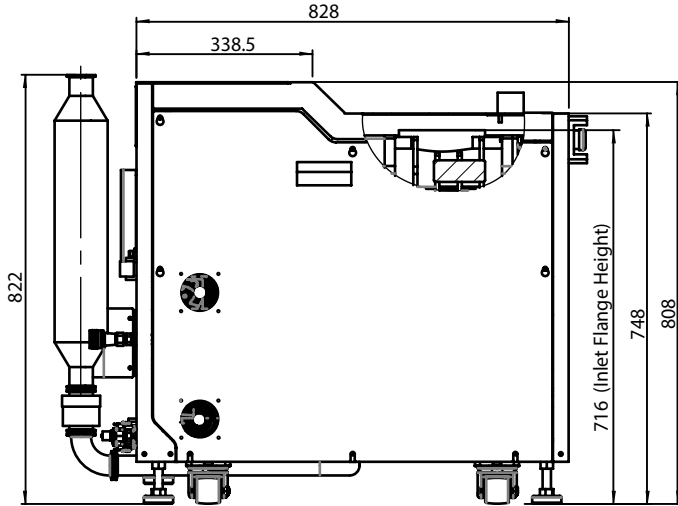
iPH 200

Dimensions are in mm





iPH 610/1220
Dimensions are in mm



iPH 1820
Dimensions are in mm

